

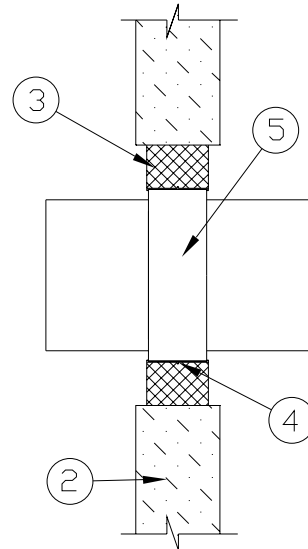
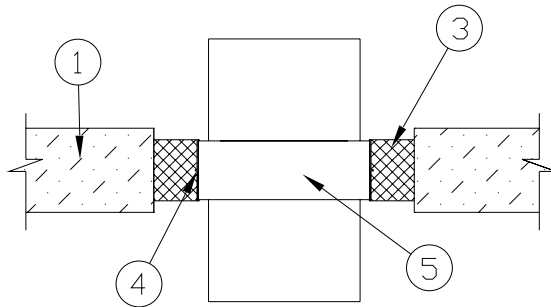
# ductwork with dampers

Test Report No. TE200637, TE200638

Integrity up to 4hrs.

TE200637  
TE200638

All errors and omissions excepted. All installations must be fully in accordance with Hilti application instructions. If in doubt contact Hilti for further technical details.



1. Floor: Concrete, masonry minimum 150mm
2. Wall: Concrete, masonry minimum 150mm
3. CP 636 Firestop Mortar
4. HEVAC Krane
5. Damper

Hilti (Gt. Britain) Limited  
1 Trafford Wharf Road  
Trafford Park, Manchester M17 1BY  
Freephone: 0800 886 100  
Freefax: 0800 866 200

The test utilised the general principles of BS476: Part20: 1987, in conjunction with additional guidelines adopted from the draft document CEN/TC 127 N579

These drawings are intended to be representational of tests carried out. They are not intended as a full and complete test report. For exact test details, please contact Hilti directly.

# ductwork with dampers

Test Report No. TE200637, TE200638

Integrity up to 4hrs.

TE200637  
TE200638

All errors and omissions excepted. All installations must be fully in accordance with Hilti application instructions. If in doubt contact Hilti for further technical details.

Install Hilti CP 636 cement-based Firestop Mortar with thermal insulating properties from admixed perlite around all services including metal, plastic and insulated metal pipes, cable tray, trunking and ductwork with HEVAC damper frame allowing up to 60% cable loading as a percentage of the opening size in all solid walls from 120mm thick and floors from 75mm thick with no asbestos, phenol or halogen constituents to provide smoke, gas tight seal with up to 4 hours hours integrity and insulation when subjected to the test conditions of BS 476 pt 20/prEN 1366 and after age testing to DafStb guidelines. All installations to be in full accordance with Hilti application instructions which may involve other Hilti products.

Hilti (Gt. Britain) Limited  
1 Trafford Wharf Road  
Trafford Park, Manchester M17 1BY  
Freephone: 0800 886 100  
Freefax: 0800 866 200

The test utilised the general principles of BS476: Part20: 1987, in conjunction with additional guidelines adopted from the draft document CEN/TC 127 N579

These drawings are intended to be representational of tests carried out. They are not intended as a full and complete test report. For exact test details, please contact Hilti directly.