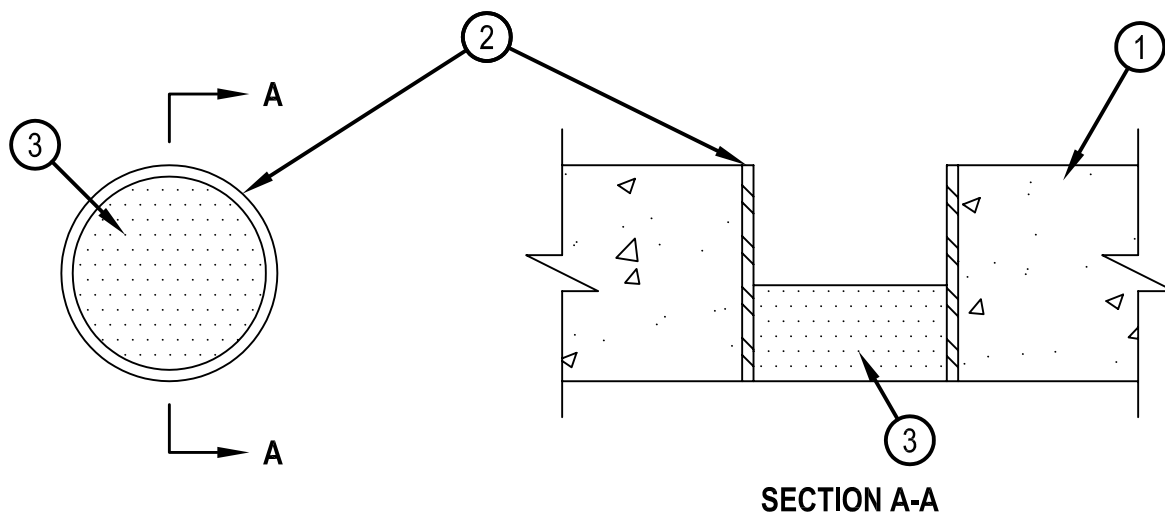


System No. C-AJ-0055

F Rating -- 3 Hr

T Rating -- 0 Hr



1. Floor or Wall Assembly -- Min 4-1/2 in. thick reinforced lightweight or normal weight (100-150 pcf) concrete. Wall may also be constructed of any UL Classified Concrete Blocks*. Max diam of opening is 4 in.
See Concrete Blocks (CAZT) category in the Fire Resistance Directory for names of manufacturers.
2. Metallic Sleeve -- Nom 4 in. diam (or smaller) Schedule 40 (or heavier) steel pipe cast or grouted into floor or wall assembly, flush with floor or wall surfaces.
3. Fill, Void or Cavity Material* -- Fire block min 2 in. thick cut to a diam 1/2 in. larger than the opening, flush with bottom surface of floor or with both surfaces of wall.

HILTI CONSTRUCTION CHEMICALS, DIV OF HILTI INC -- FS-Fire Block

*Bearing the UL Classification Mark



Reproduced by HILTI, Inc. Courtesy of
Underwriters Laboratories, Inc.
September 11, 1997

