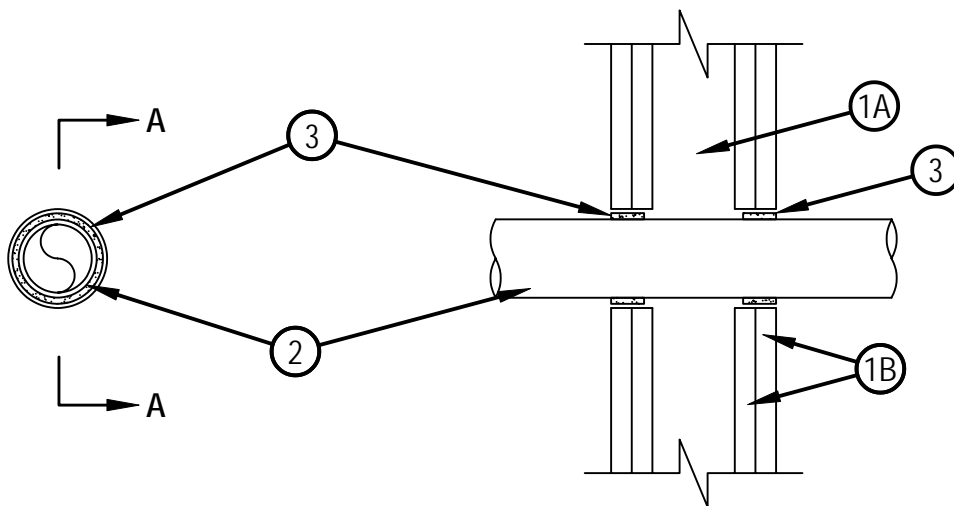


System No. W-L-2235
F Rating - 1 AND 2 Hr (SEE ITEM 1)
T Rating - 0 Hr



SECTION A-A

1. Wall Assembly -- The 1 or 2 hr fire-rated gypsum wallboard/stud wall assembly shall be constructed of the materials and in the manner specified in the individual U300 or U400 Series Wall and Partition Designs in the UL Fire Resistance Directory and shall include the following construction features:

A. Studs -- Wall framing may consist of either wood studs or steel channel studs. Wood studs to consist of nom 2 by 4 in. lumber spaced 16 in. OC. Steel studs to be min 2-1/2 in. wide and spaced max 24 in. OC.

B. Gypsum Board* -- Min 5/8 in. thick, 4 ft wide with square on tapered edges. The gypsum wallboard type, thickness, number of layers and orientation shall be as specified in the individual Wall and Partition Design. Max diam of opening is 3 in.

The hourly F rating of the firestop system is equal to the hourly fire rating of the wall assembly in which it is installed.

System No. W-L-2235
F Rating - 1 AND 2 Hr (SEE ITEM 1)
T Rating - 0 Hr

2. Through Penetrants -- One nonmetallic pipe or tube to be centered within the firestop system with a nom 5/16 in. annular space. Pipe or tube to be rigidly supported on both sides of wall assembly. The following types and sizes of pipes may be used:

- A. Polyvinyl Chloride (PVC) Pipe -- Nom 2 in. diam (or smaller) Schedule 40 cellular or solid core PVC pipe for use in closed (process or supply) or vented (drain, waste or vent) piping systems.
- B. Acrylonitrile Butadiene Styrene (ABS) Pipe -- Nom 2 in. diam (or smaller) Schedule 40 cellular or solid core ABS pipe for use in closed (process or supply) or vented (drain, waste or vent) piping systems.
- C. Chlorinated Polyvinyl Chloride (CPVC) Pipe -- Nom 2 in. diam (or smaller) SDR 13.5 CPVC pipe for use in closed (process or supply) piping systems.
- D. Crosslinked Polyethylene (PEX) Tubing -- Nom 1 in. diam (or smaller) SDR 9 PEX tube for use in closed (process or supply) piping systems.
- E. Flame Retardent Polypropylene (FRPP) Pipe -- Nom 2 in. diam (or smaller) Schedule 40 FRPP pipe for use in closed (process or supply) or vented (drain, waste or vent) piping systems.

3. Fill, Void or Cavity Material* -- Wrap Strip -- Nom 3/16 in. thick by 1 in. wide intumescent wrap strip. The wrap strip is continuously wrapped around the outer circumference of the pipe once and slid into annular space such that the ends are flush with the surface of the wall. Wrap strips are installed on each surface of the wall.

HILTI CONSTRUCTION CHEMICALS, DIV OF

HILTI INC -- CP648-E W25/1" Wrap Strip

- A. Fill, Void or Cavity Material* - Wrap Strip -- (As an alternate to the wrap strip in Item 3 on nom 1-1/2" and 2" diam pipes only) - Nom 3/16 in. thick by 1-1/2 or 2 in. wide intumescent wrap strip. One layer of intumescent wrap strip is tightly wrapped around the pipe with ends butted and held in place with integrated tape. Wrap strip slid into annular space such that the ends are flush with the surface of the wall. Wrap strips are installed on each surface of the wall.

HILTI CONSTRUCTION CHEMICALS, DIV OF

HILTI INC -- CP648-S-1.5" US, CP648-S-2" US

*Bearing the UL Classification Mark



Reproduced by HILTI, Inc. Courtesy of
Underwriters Laboratories, Inc.
APRIL 22, 2005

