

Firestop Joint Spray CFS-SP WB

A sprayable fire-rated mastic for construction joints where maximum movement is required



■ Application

- Top-of-wall joints
- Curtain wall/edge of slab
- Expansion joints
- Concrete, masonry and dry wall assemblies
- Wall and floor/wall assemblies rated up to 4 hours

Advantages

- Best in class sprayable at cold temperatures
- Maximum flexibility, meets 500 cycle requirements (Class II and III Approval*)
- Quick and easy installation with the sprayers can help save time and money
- Contains no halogens, solvents or asbestos
- Water based formulation so spills and over-spray clean up quickly and easily
- Paintable
- Meets LEED™ requirements for indoor environmental quality credit 4.1 Low Emitting Materials, Sealants and Adhesives and 4.2 Paints and Coatings

(*ASTM E 1966 and UL 2079)

Technical data*

	CFS-SP WB
Density	Approx 1.3 g/cm ³
Colour	Available in white and red**
Application temperature	4°C to 40°C
Temperature resistance	-40°C to 80°C
Consistency	Sprayable liquid
Chemical basis	Acrylic-water-based-dispersion
Curing time	Approx. 24 hours @ 23°C, 50% humidity for 3.2mm depth
Ph-value	Approx. 8-9
Movement capability	Up to 50%
Skin forming time (at 23° C / 50% r.H.)	2 hours

*At 23°C and 50% relative humidity

**Red colour requires two (2) weeks lead time



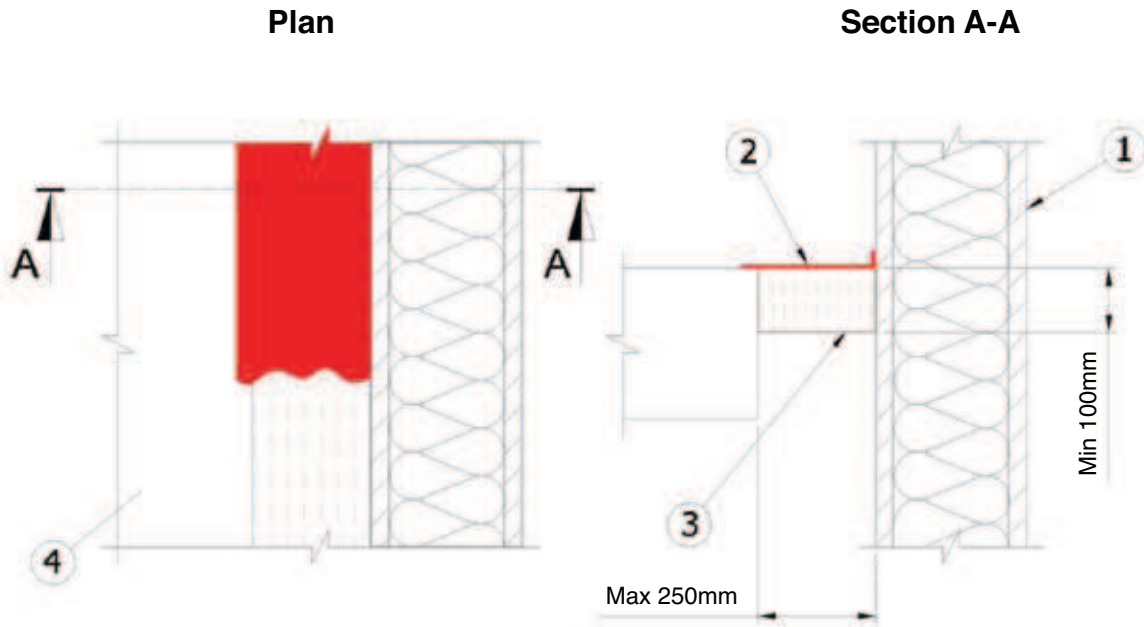
EN 1364-4



Ordering

Order description	Package Contents	Package Quantity	Item number
Firestop joint spray CFS-SP WB white	CFS-SP WB bucket (19 litres) White	1 pc	00430806
Firestop joint spray CFS-SP WB red	CFS-SP WB bucket (19 litres) Red Requires two (2) weeks lead time	1 pc	00430811

Technical Information



1. Curtain wall assembly
2. CFS-SP WB Firestop Joint Spray - 1.5mm dry film thickness (3mm wet).
Installed in accordance with Hilti guidelines.
Overlap spray onto slab and curtain wall by min 12.5mm.
3. Mineral fibre - min density 60Kg/m³ - min melting temp 1000°C
Fibres must run vertically to allow compression.
Compressed to min 33% (e.g. 150mm compressed into 100mm gap).
4. Concrete floor slab capable of providing the fire rating of the proposed seal.

For more standard details and technical information register online at the Hilti Firestop Design Centre at www.hilti.co.uk/cfs

Installation instructions for Firestop Joint Spray CFS-SP WB

- | | | |
|---|---|---|
| <p>Notice</p> <ul style="list-style-type: none"> • Before handling, read Material Safety Data Sheet and product label for safe usage and health information. • Instructions below are general guidelines <p>Opening</p> <ol style="list-style-type: none"> 1. Clean the opening. Surfaces to which Firestop Joint Spray will be applied should be cleaned of loose debris, dirt, oil, wax and grease. The surface should be moisture and frost free. | <p>Application of Firestop Joint Spray</p> <ol style="list-style-type: none"> 2-4. Mineral wool packing: Install the prescribed back filling material type and depth to obtain desired rating. 5. Application of Firestop Joint Spray: Apply Firestop Joint Spray to the required depth in order to obtain the desired rating. Make sure Firestop Joint Spray contacts all surfaces. 6. Curing time: Allow approx. 24 hours for typical application thickness (@ 73°F / 23°C) 50% humidity for 1/8" depth for the Firestop Joint Spray to fully cure. 7. Identification: For maintenance reasons all Firestop Joint Spray applications can be permanently marked with an identification plate and fastened in a visible position next to the seal. | <p>Not for use</p> <ul style="list-style-type: none"> • In areas immersed in water • On hot surfaces (above 176°F) <p>Storage</p> <ul style="list-style-type: none"> • Store only in the original packaging at temperatures 39°F to 77°F (4°C to 25°C) • Observe expiry date on package |
|---|---|---|



*48h @ 73°F (23°C) / 50% RH