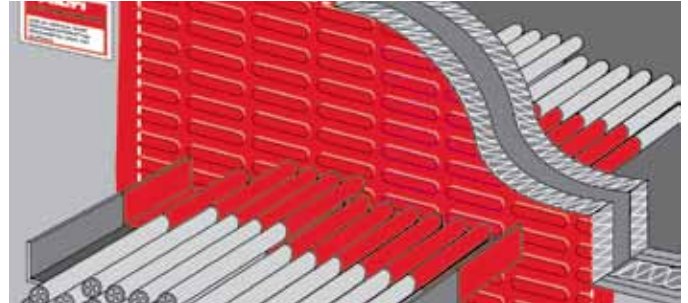


Firestop coating system CP 673

Hilti CP 673 is an innovative system for fast, reliable and cost effective firestopping of wall and floor openings - especially large ones. Tested to both BS476 Part 20 and EN 1366-3



Applications

- Extended approvals for large diameter cables, damped penetrations and double board usage
- Single cables, cable bundles, cable tray, air ducts and pipes
- Non combustible pipes (in conjunction with other products)
- Large penetrations possible up to 5 metres high or with an unrestricted length
- Detail for wall dampers available

Advantages

- Pre-coated board
- Odourless and solvent free
- Less prone to damage due to pliancy of the material and the resilient elastic coating
- Approved for a wide range of applications
- Fast tight seal, less sealant required for gap filling
- Tested for face-fixed applications

Technical data

CP 673	
Fire rating	Up to 4 hours
Base materials	Concrete, Masonry, Drywall
Application temperature range	5°C - 40°C
Acoustics performance	Up to 62dB
Density (coating)	1470 kg/m ³
Colour	White
Skin forming time (at 23°C/50% r.H)	7 hours (CP 673 Coating)

Maximum area of CP 673 Type B (Penetrations) in different rated substrates. Estimated sound reduction values.

Concrete (details also available for drywall)

Substrate value Rw	Area of wall m ²	Area of CP 670 m ²	Total area m ²	Required value Rw
35	8.8	0.2	9	35
40	8.0	1.0	9	
45	7.6	1.4	9	
50	7.5	1.5	9	
55	7.5	1.5	9	
40	8.95	.05	9	40
45	8.7	0.3	9	
50	8.6	0.4	9	
55	8.6	0.4	9	
45	8.99	.01	9	
50	8.9	0.1	9	
55	8.87	.13	9	
50	9.0	0	9	50
55	8.97	.03	9	
55	9.0	0	9	

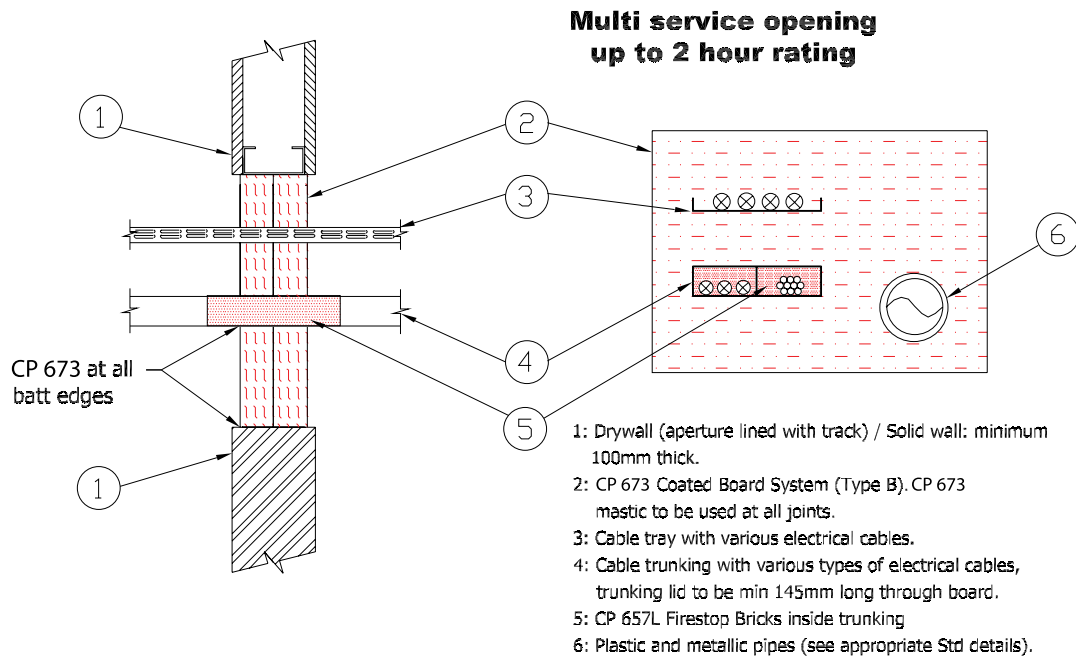
All calculations are based on DIN 4109 Supplement 1 - Sound control in buildings, design examples and calculation procedure. 11 - Resulting sound insulation R^{w, R, res.} for a component made from elements with differing degrees of sound insulation, e.g. a wall with a door or window.



Ordering

Order description	Package Contents	Package Quantity	Item number
Firestop coating CP 673	CP 673 firestop coating (17,5 kg bucket)	1 pc	00378246
Firestop filling sealant CP 673 (310 ml)	CP 673 firestop sealant	20 pc	00378247
Firestop board CP 673 (40)	40 x CP 673 firestop acoustic board	40 pc	00376024

Technical Information



For more standard details and technical information register online at the Hilti Firestop Design Centre at www.hilti.co.uk/cfs

Installation instructions for CP 673 coating board system

Notice

- Before handling, read Material Safety Data Sheet and product label for safe usage and health information.
- Instructions below are general guidelines

Application of Fire Blocks

1. Clean the opening. Do not pre-moisten opening surfaces. Cables and cable supporting structures must be dry and clean from dust, grease or oil, and installed in compliance with local building and electrical standards.
2. Cut the Hilti CP 673 Firestop board to size. In case of services cut out required space. Coat cut edges with Hilti CP 673 Firestop Sealant.
3. Coat the surface of the opening with Hilti CP 673

- Firestop Sealant (refer to relevant BS reports for specific details).
Insert the mineral wool panel flush with the opening edge.
4. Pack any larger gaps with loose mineral wool. Seal between cables with Hilti CP 673 Firestop filling Sealant. Fill gaps with Hilti CP 673 Firestop Sealant
 5. Thoroughly stir Hilti CP 673 Fire Safety Coating. Apply Hilti CP 673 Fire Safety Coating to the cables and cable trays on all surfaces over the required length. It can be applied using a brush, roller or airless spray gun (recommendation: a nozzle 0.029" diameter, spray angle 40°). To achieve the dry coating of 0.7 mm, a wet film thickness of ca. 1.1 mm is required. Fasten installation plate (if required)

Instead of using a Hilti CP 673 Firestop board Hilti CP 673 Fire Safety Coating can be either sprayed or painted on the jobsite prior or during installation, respectively in advance. To achieve the dry coating of 0.7 mm, a wet film thickness of ca. 1.1 mm is required.

Hilti CP 673 Fire Safety Coating can be used where cutting has caused exposed mineral wool to appear. In addition, the coating can be applied if mineral wool is used to pack gaps.

Storage

- Store only in the original packaging in a location protected from moisture and direct sunlight

Note

