

CP 643N intumescent firestop collar

Product description

A ready to use firestop collar made of a galvanised steel housing and intumescent inserts for firestopping combustible pipes. Tested to BS476 Part 20.

Areas of application

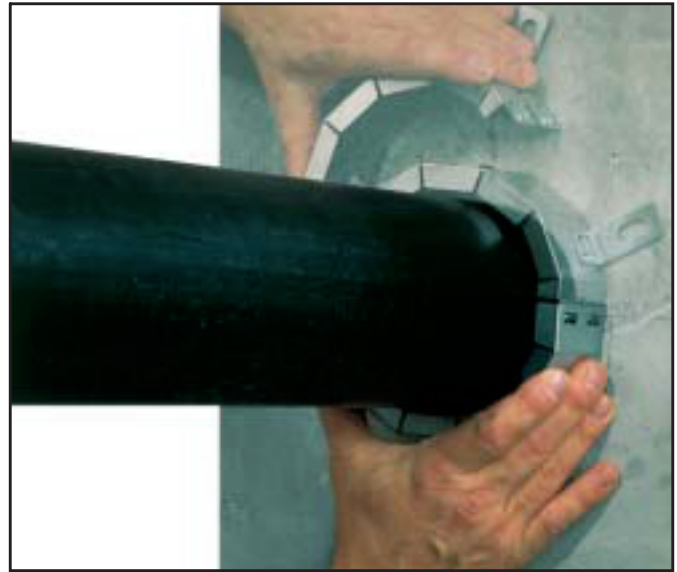
- PVC pipes
- HDPE pipes
- PP pipes
- ABS pipes

Product features

- Adjustable mounting tabs
- Ready to use no tools required for installation
- Simple and rapid installation by hand

Base materials

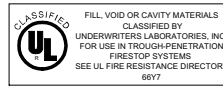
Concrete : Drywall
 Masonry : Porous Concrete
 Walls and floors from 150mm thick



System advantages/customer benefits

- Quick and easy closure without use of a tool
- Optionally positioned tabs for simple fastening

Approvals Internationally tested and approved



Other tests include : ASTM E 814 : ASTM E 84-91a : AS 1530

Recommendations for use

- Fit the jacket around the pipe, lock the closure with firm pressure until it latches.
- Fit the fastening hooks on the firestop jacket to suit the available space.
- Secure the firestop jacket using approved Hilti approved anchors.

Storage

- Observe expiry date on packaging.

The following dimensions must be observed when fitting the CP 643N firestop collar:

Material	Wall cellular concrete masonry solid concrete	Floor cellular concrete
Min. thickness of building component for pipes	150 mm*	150 mm
Min. pipe diameter	32 mm	32 mm
Max. pipe diameter	170 mm	170 mm
CP 643N	two mounted, one on each side	one mounted on underside

* Can be installed in 50 mm thick CP670 coated board system.

Contact Customer Services for details.

CP 643N intumescent firestop collar

	Packaging contents (pcs)	Ordering Designation	Item no.
Intumescent firestop collar	1	CP 643N-50/1.5"	304325
Intumescent firestop collar	1	CP 643N-63/2"	304326
Intumescent firestop collar	1	CP 643N-90/3"	304328
Intumescent firestop collar	1	CP 643N-110/4"	304329
Intumescent firestop collar	1	CP 643N-125/5"	304330
Intumescent firestop collar	1	CP 643N-160/6"	304331

All the above include fastening hooks

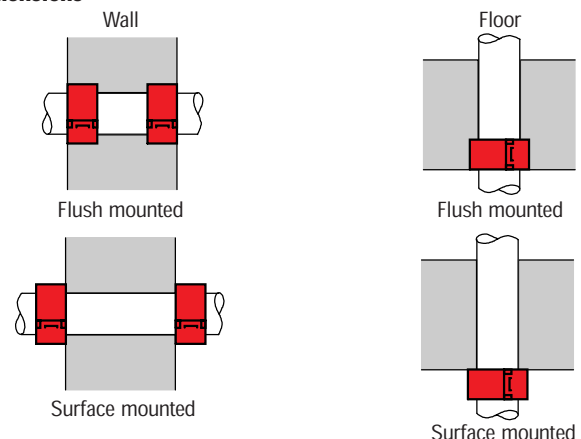
Spare part

Fastening hook	1	CP 643N/6441-6"	304345
----------------	---	-----------------	--------



CP 643N

Dimensions



CP 643N intumescent firestop collar

Technical data

Collar/plastic pipes

Designation/ size	Pipe outside dia. (mm)	Collar outside dia. (mm)	Collar length (mm)	No. of hooks and fasteners
CP 643N-50/1.5"	32 – 51	66.7	22.4	2
CP 643N-63/2"	52 – 64	81.7	32.4	2
CP 643N-90/3"	75 – 91	116.7	42.4	3
CP 643N-110/4"	92 – 115	145.7	47.4	3
CP 643N-125/5"	116 – 125	166.1	47.8	4
CP 643N-160/6"	126 – 170	235.5	48.2	4

Acoustic insulation – installation tips

- Close the remaining opening (max. 20 mm wide annular space) with non-flammable mineral wool with a melting temperature >1000°C. For a neat finish, apply CP 611A intumescent firestop mastic about 10 mm thick on both sides.
- Position the firestop collar to ensure that it and the pipe are not touching at any point.

Penetration

- Drill through the wall/floor using Hilti DCM diamond drilling equipment and a core bit of suitable size.
- Install the plastic pipe

Fit the CP 643N firestop collar

1. Seal the opening

Large gaps must be closed with mortar. Alternatively, they can be closed with CP 611A.

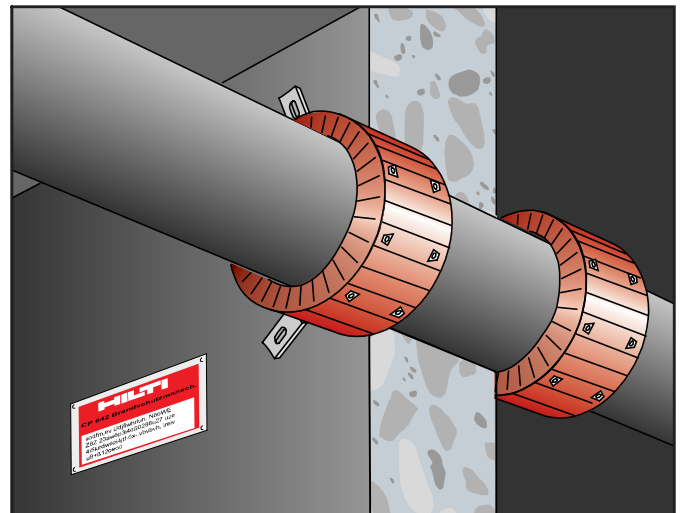
The approved methods vary and are given in the test certificates and approvals.

2. Clean the plastic pipes

Expansion of the intumescent material during a fire closes the plastic pipe. Very dirty pipes with, for example, remains of mortar, may lead to a delay in this closing action. Badly soiled plastic pipes should, therefore, be cleaned in the area where the CP 643N firestop collar is to be installed.

3. Seal against smoke and gases

Gaps between the plastic pipe and the opening must be sealed on one side of the wall with sealant CP 611A to seal against smoke and gases passing through the gaps during the first minutes of fire. The intumescent inlay of CP 643N will close the opening, when activated by heat and fire.



4. Attach fastening hooks (supplied in the box)

The fastening hooks can be attached to various points on the metal housing. This allows the fastening points to be made to suit the space available in each case. The hooks must be positioned as symmetrically as possible. The required number of fastening hooks is indicated on the packaging and in the table on the previous page.

5. Cast-in mounting

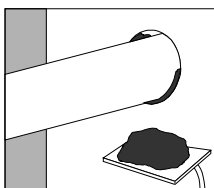
- Ensure the penetration is large enough to accommodate the outside diameter of the CP 643N collar.
- Slide the CP 643N collar into the opening.
- For ceilings, CP 643N must be flush with the soffit
- For walls, a) Insert one collar from each side or,
b) Insert one collar, position it centrally if wall thickness is \leq collar length plus 80mm.
- Backfill around the installed collar with mortar.

Safety precautions

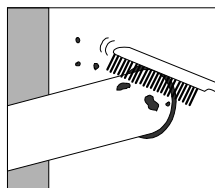
- Please refer to MSDS data sheet available as a download from the Technical Library on the Hilti web site at www.hilti.co.uk

Installation instructions for CP 643N

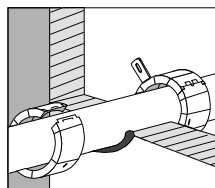
Use CP611A for smoke and acoustic seal



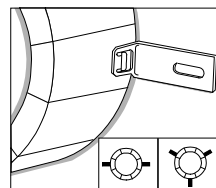
Close remaining gap to ensure smoke and gas tight seal



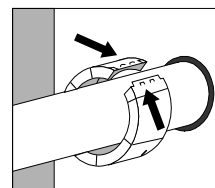
Clean plastic pipe



Seal against smoke and gases



Attach fastening hooks



Close collar

The above applications are not exhaustive. For further details please use any of the contacts listed below.